

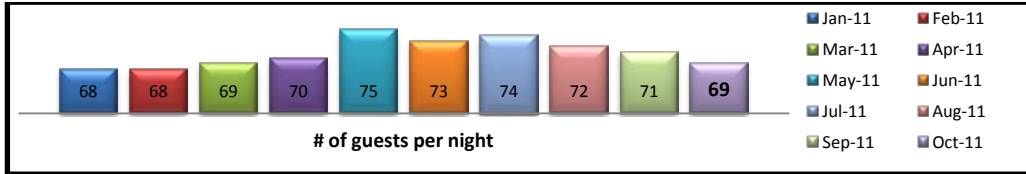
**Homeless Advisory Board's Snapshot of Economic Indicators in the Sioux Falls Area**  
January 2011 – January 2012

**General Information**

Sioux Falls' unemployment rate for December 2011 was 4.3% (up from November's 3.8%) and the National unemployment rate for January 2012 was 8.3%.  
South Dakota's 2011 poverty rate is 14.4%  
Sioux Falls estimated total population is 156,300 (an increase of 1600 people over the prior year)  
2012 Area Median Income for a family of four in Sioux Falls is \$68,900 (2011 was \$67,900)  
Minnehaha County Annual Homeless Count (September 2011) was 729 individuals (including 174 children)

**Shelter Bed Occupancy**

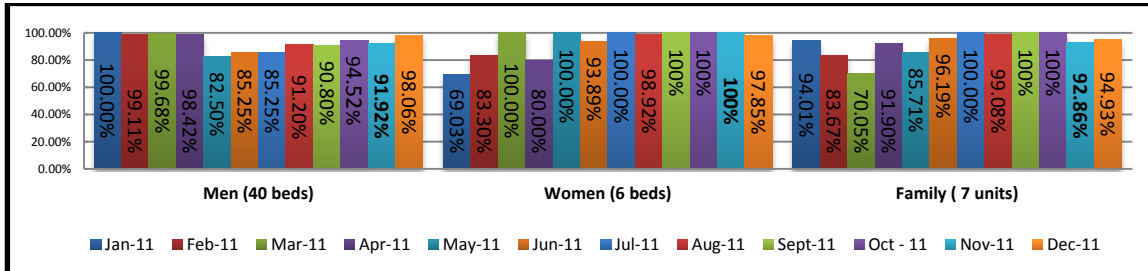
**Union Gospel Mission**



UGM has **70 male beds** and **48 women/children beds**  
-From Jan-Oct 2011, provided **21,686 nights of lodging**  
Also during same months, provided **63,193 meals**

**\*On January 30, 2012, UGM had 35 male beds occupied and 11 female beds occupied**

**St. Francis House**



Number of female beds fluctuates depending on need.

**98.90% occupancy for July 2011**  
**96.4% occupancy for August 2011**  
**93.8% occupancy for Sept. 2011**  
**98.2% occupancy for Oct. 2011**  
**94.9% occupancy for Nov 2011**  
**96.9% occupancy for Dec 2011**

**January 18-31, 2012 = 100% occupied**

**Children's Inn – Shelter**

2010	J	F	M	A	Ma	J	Ju	Au	S	O	N	D	2011	J	F	M	A	Ma	J	Ju	Au	S	O	N	D
Adults	32	27	29	34	47	37	44	39	41	44	33	29	Adults	30	39	31	31	41	40	39	42	36	52	45	40
Child w mom	28	25	29	26	43	52	47	34	38	44	30	38	Child w mom	37	49	44	27	44	56	56	41	41	62	53	36
A & N	47	35	55	37	51	48	58	51	65	39	52	54	A & N	58	50	54	46	44	54	52	49	58	29	28	45
TOTAL	107	87	113	97	141	137	149	124	144	127	115	121	TOTAL	125	138	129	104	129	150	147	132	135	149	130	121
Shelter days	662	709	739	817	1098	1211	1246	981	865	865	789	1075	Shelter days	848	1004	1203	845	1207	943	1232	1279	1003	1366	934	983

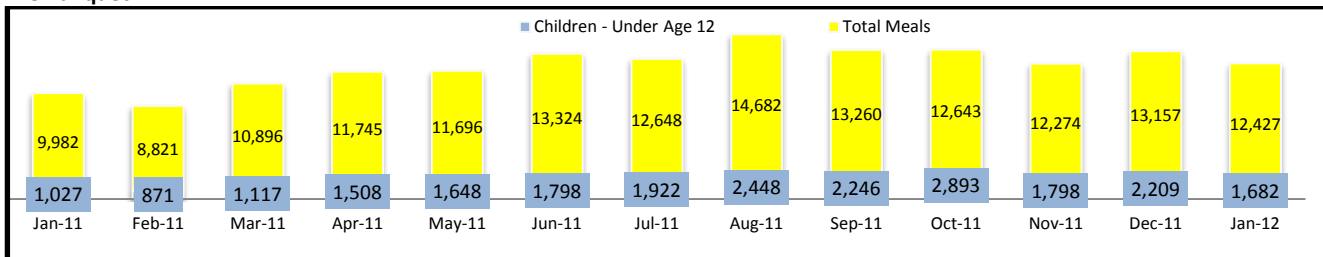
\*Total official capacity is **31**, but they run above that number all the time because of cribs, rollaways, etc. \* Total Abused and Neglected (A&N) children bed capacity is **12**.

**\* 2011 had a total of 12,847 shelter days – the most ever for Children's Inn**

**Salvation Army Warming Center** – averaging 36 individuals a night, highest capacity to date is 51 individuals (open from 7pm to 7am when temps below 28)

**FOOD**

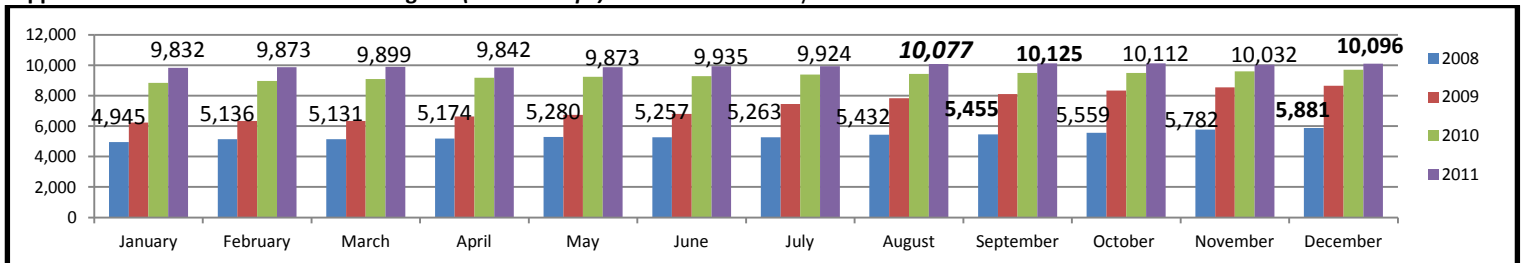
**The Banquet**



In 2010, The Banquet served 141,751 meals with 19,687 of those meals served to children under age 12.

**2011 total**  
145,128 meals served

**Supplemental Nutritional Assistance Program (Food Stamps) - Minnehaha County**



**Sioux Falls School District's Free and Reduced Meals**

	May 2011	Oct 2010	Oct 2009
<b>Elementary</b>	<b>46.8.2%</b>	<b>43.7%</b>	<b>42.6%</b>
<b>Middle/High School</b>	<b>42.6%/34.9%</b>	<b>38.2%</b>	<b>37%</b>
<b>Total</b>	<b>41.4%</b>	<b>42.2%</b>	<b>37.9%</b>

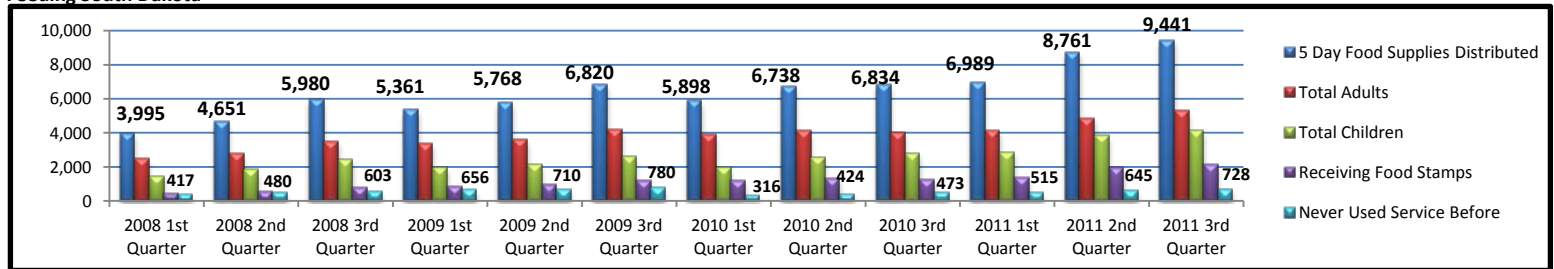
**Salvation Army**

Doubled the amount spent on food in 2010/2011 over the previous (2009/2010) year.  
Spent more in 2009-10 than in the last 5 years combined on its food pantry  
- Site Service and Canteen Meals (local Methodist churches are helping with these) serves between 190 - 250 meals on Saturday and between 350 - 530 on Sundays

**Faith Temple Church – Friday Afternoon Giveaways:** 600 households are now in line for food on Fridays up from approximately 300 people at this same time in 2010.

**Necessities for Neighbors** averages 250 families at their monthly distribution providing households with hygiene items, diapers/wipes, and laundry soap.

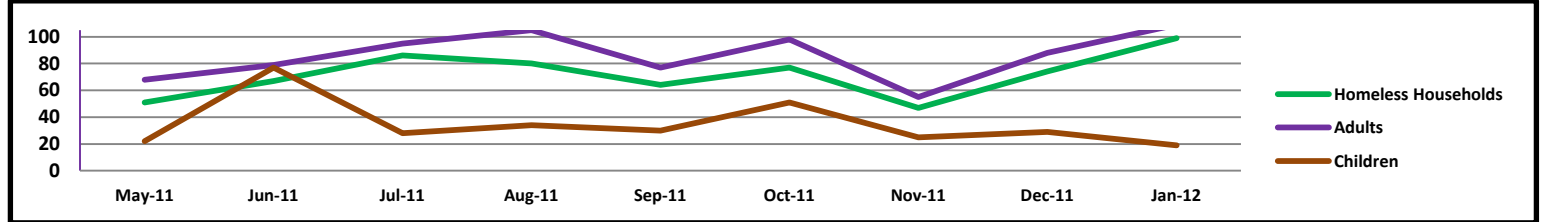
**Feeding South Dakota**



**\*\*Backpack Program – 2,614 in Sioux Falls down 483 from last year because of funding restraints ( increasing again as donations have come in so up 200 in December 2011)**

**Feeding SD additional data in 2011 3<sup>rd</sup> Quarter:** 18.85% of households had full-time employment \*36.53% had no personal transportation

**Minnehaha County Human Services – Homeless Households, Adults, and Children**



**Inter-lakes Community Action Partnership (ICAP):** January 1, 2011 – September 30, 2011 – Homeless Prevention and Rapid Rehousing Program (HPRP) – 79 households  
 January 1, 2011 – September 30, 2011 – **Heartland House** served 64 individuals, 58 households and 118 children  
 - *Heartland House currently has a priority wait list of 38 families.* This list consists of those families that are literally homeless on the day of application per the HUD definition of homelessness. This number has increased with implementation of HUD’s HEARTH (Homeless Emergency Assistance and Rapid Transition to Housing).

**Community Outreach**

Month	Cases Served with Financial Assistance and Transportation	# of Individuals Served	Cases Served with Information and Referral	Funding Exhausted by
Jan	261	562	154	1/31/2011
Feb	177	363	149	2/18/2011
March	214	437	195	3/18/2011
April	244	574	161	4/26/2011
May	176	344	159	5/31/2011
June	202	428	166	6/30/2011
July	164	345	183	7/18/2011
August	169	353	206	8/19/2011
September	180	402	248	9/13/2011
October	144	334	207	10/14/2011
November	170	386	191	11/16/2011
December	118	255	204	12/09/2011

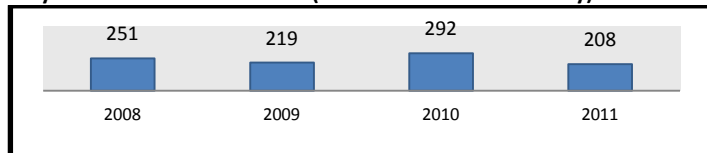
**HOUSING**

**Sioux Falls Housing** wait list as of October 12, 2011 → Total households = **3,086** \*\* No new vouchers issued in 2011, but some will for 2012

30% or less of Median Income	2,570	30-50% of Median Income	516
1 bedroom household	1,046	1 bedroom household	171
2 bedroom households	826	2 bedroom households	195
3 bedroom households	541	3 bedroom households	129
4 bedroom households	123	4 bedroom households	10
5 bedroom households	34	5 bedroom households	11

\* Wait list to obtain a voucher is approximately four years.

**City Wide Home Foreclosures (for months of Jan-Dec only)**

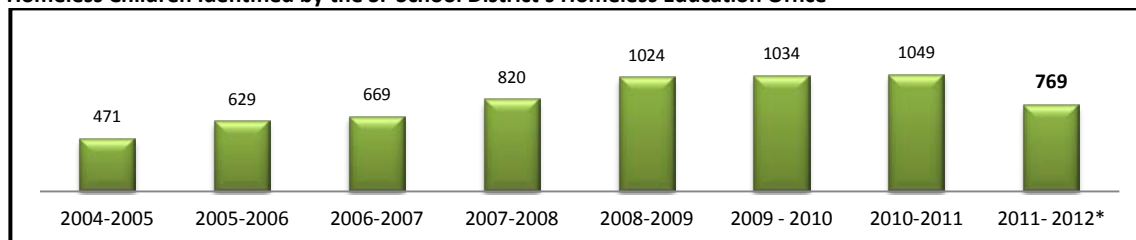


\*Core neighborhoods currently being impacted with increased home foreclosures continue to be: Whittier (16); Axtell Park/Lincoln (8), Emerson W. 12<sup>th</sup> Street (8); Pettigrew Heights (8); and All Saints (3)

*\*138 properties registered as vacant in the City of Sioux Falls (117 in Minnehaha) – up 49 from a year ago.*

**Children/Youth**

**Homeless Children Identified by the SF School District’s Homeless Education Office**



**Total families for 2011-2012 to date: 404**

\*Info current as of January 31, 2012

Total Homeless Families in 2010-2011 = 571

**2010 – 2011 Identification by first location:** Motels – 150 Unsheltered – 17 Domestic Violence Shelter – 157 Doubled-Up – 524 Emergency Shelter (UGM) – 68  
 Transitional Housing – 133 Unaccompanied Youth - 66